



CQG – JPX CME Group Petroleum Index

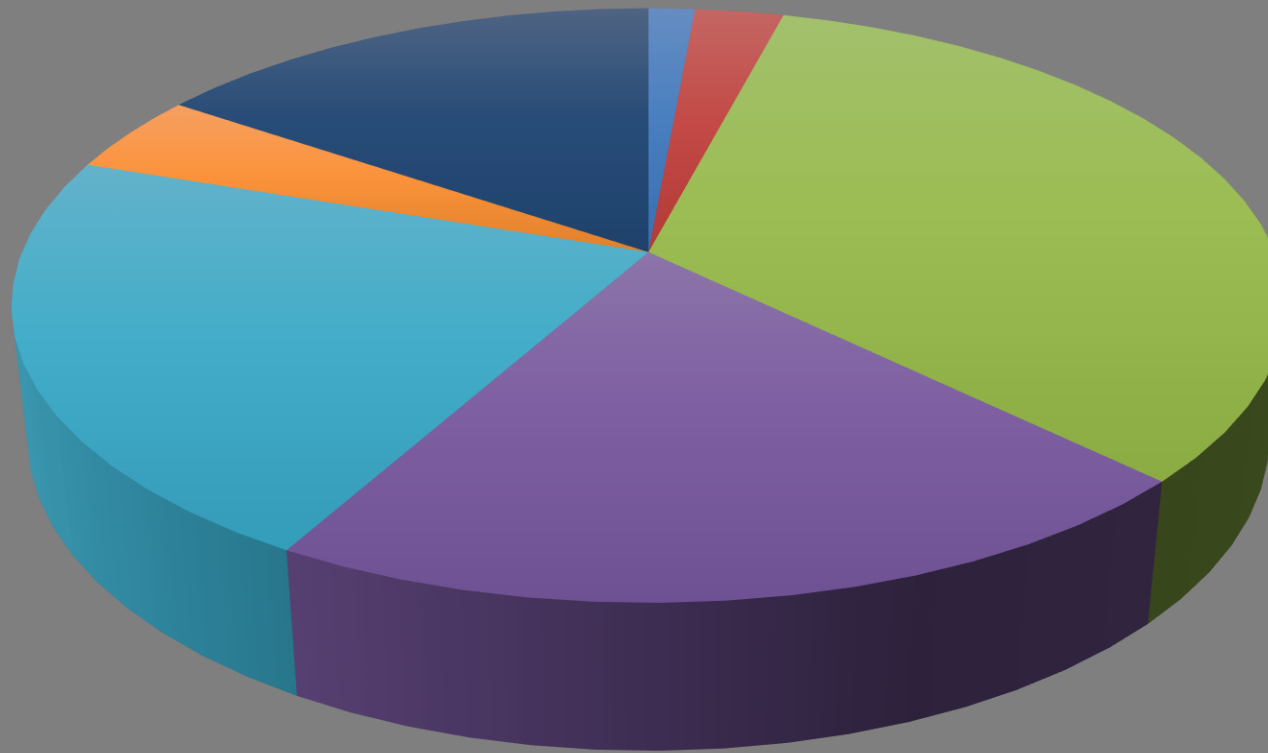
Anthony Cohen

Application Specialist, CQG



Fundamental Data

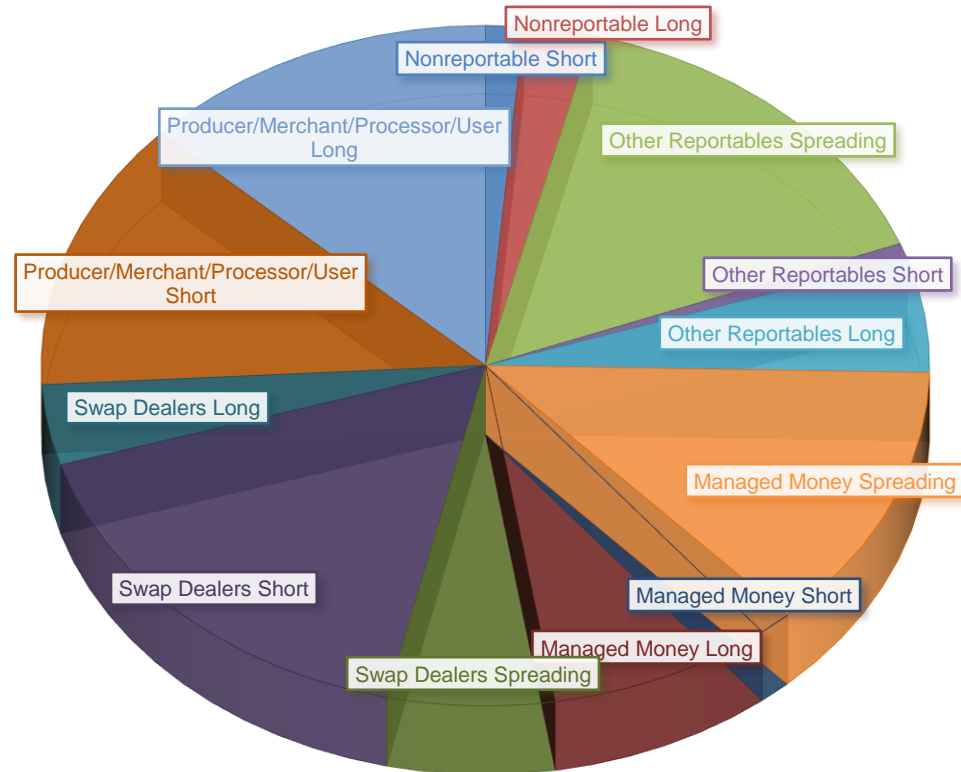
Crude Light Commitment of Traders



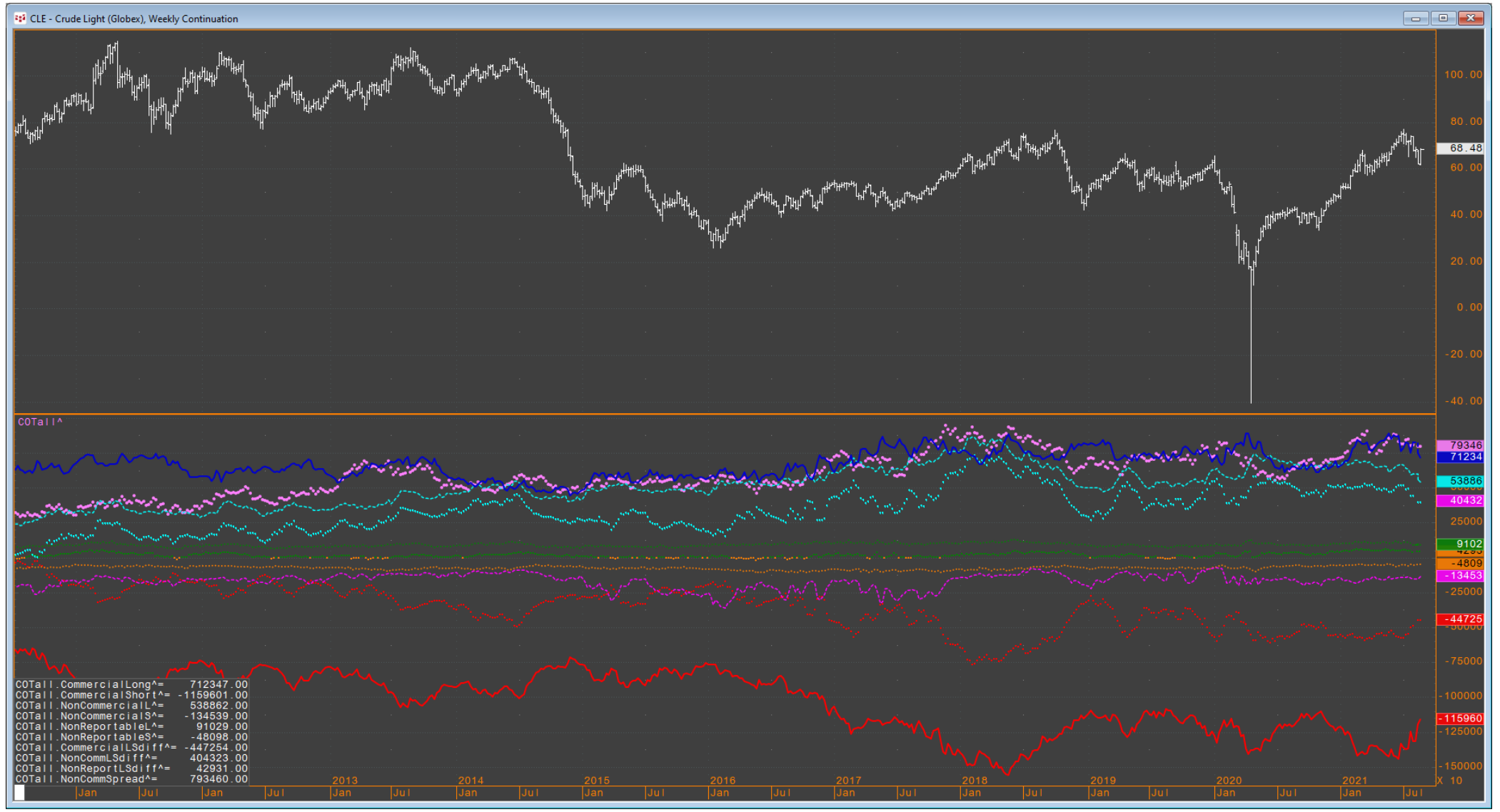
- Crude Light Nonreportable Short
- Crude Light Nonreportable Long
- Crude Light Commercial Short
- Crude Light Commercial Long
- Crude Light Non-Commercial Spreading
- Crude Light Non-Commercial Short
- Crude Light Non-Commercial Long

Commitment Of Traders data is published by the CFTC and reports the positions of the various market players. The data is reported by the firms every Tuesday but published every Friday.

COT DISAGGREGATED COMMITMENTS OF TRADERS - COMBINED



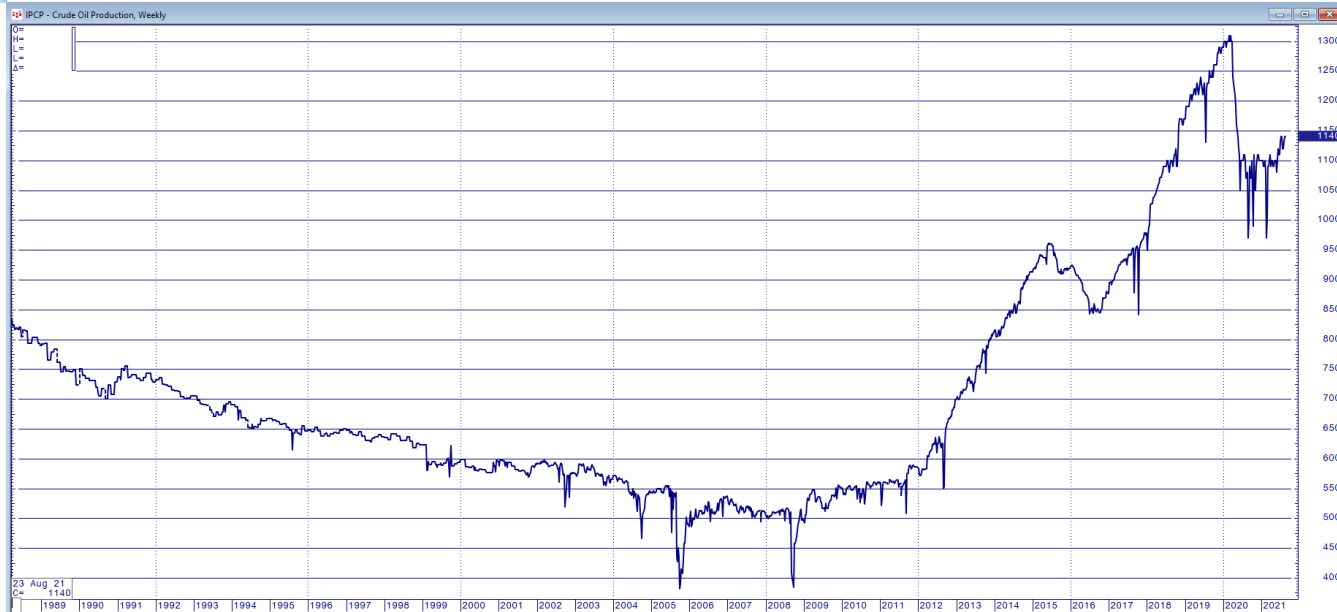
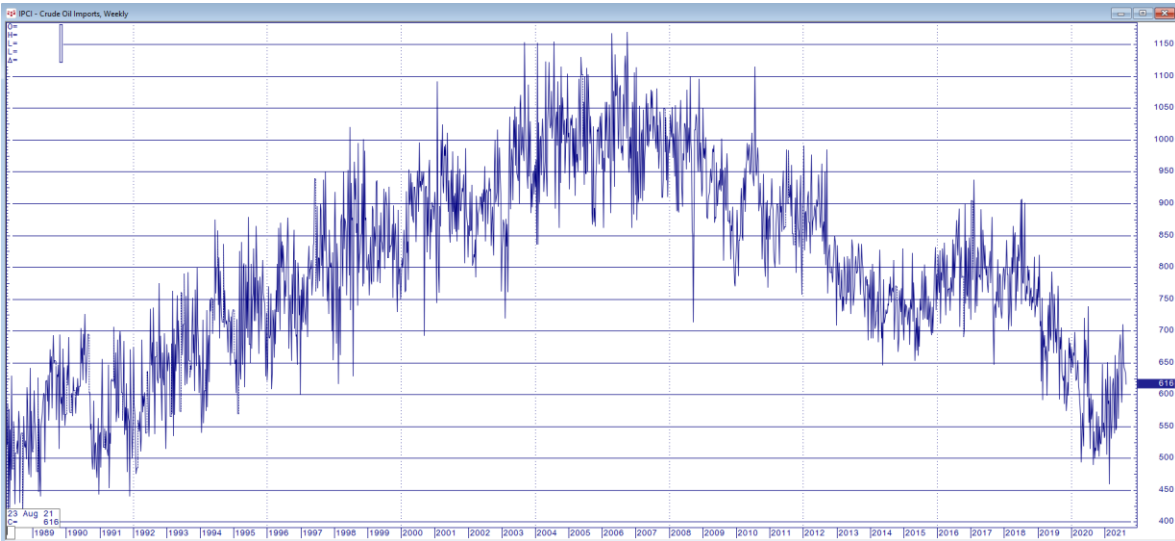
Commitment Of Traders data helps understand the dynamics of the market by showing the kind of players and types of orders that are likely to come in, going from Producers to Money Managers, Swap dealer, Spreaders and other non-reportable positions and shows who is long and short respectively.



Historical Crude oil COT weekly data

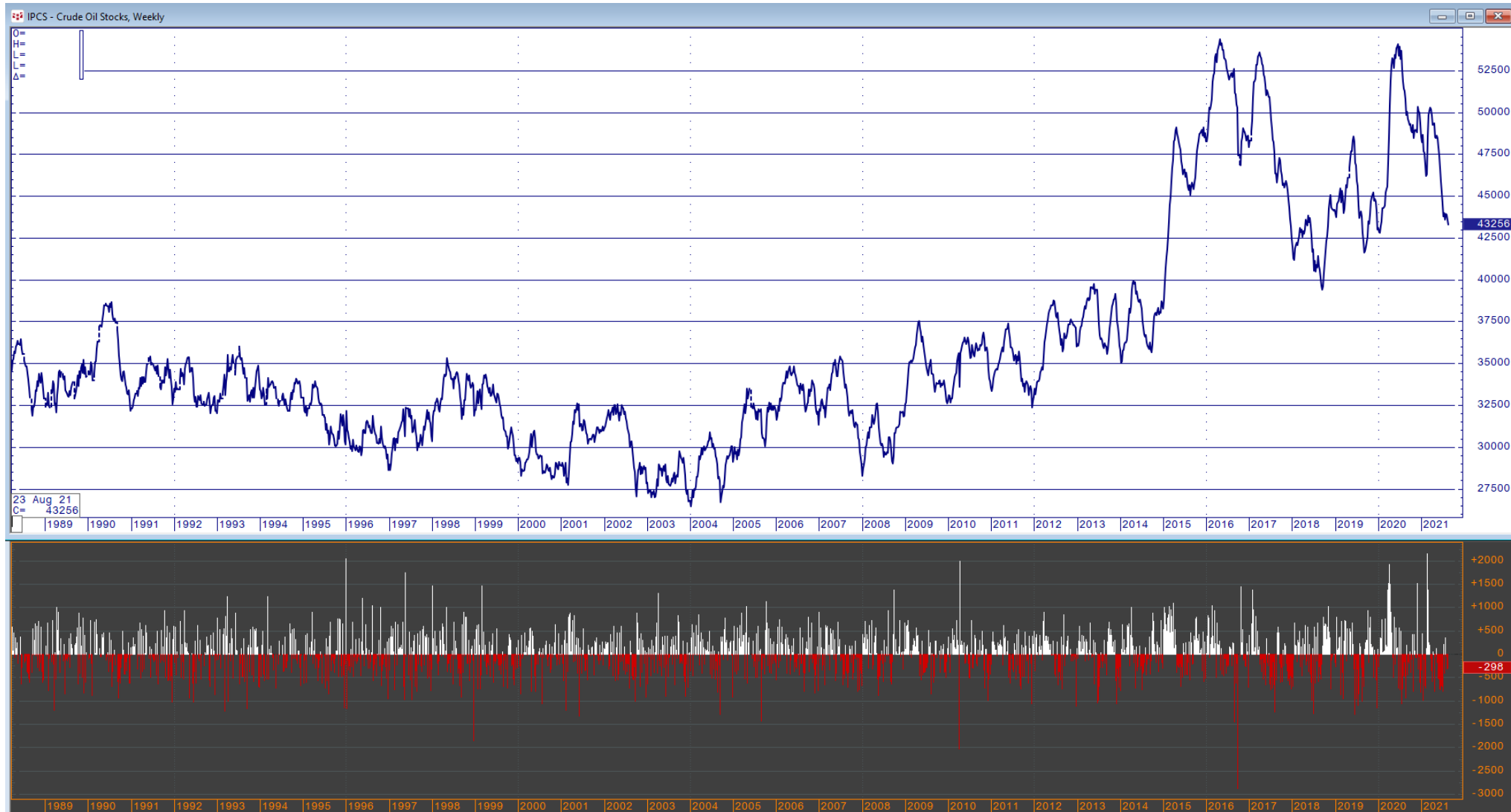
Fundamental Data – Imports and Production

Trading decisions are about finding the right balance between technical and fundamental data. Fundamental data can drive both long, medium and short term moves.



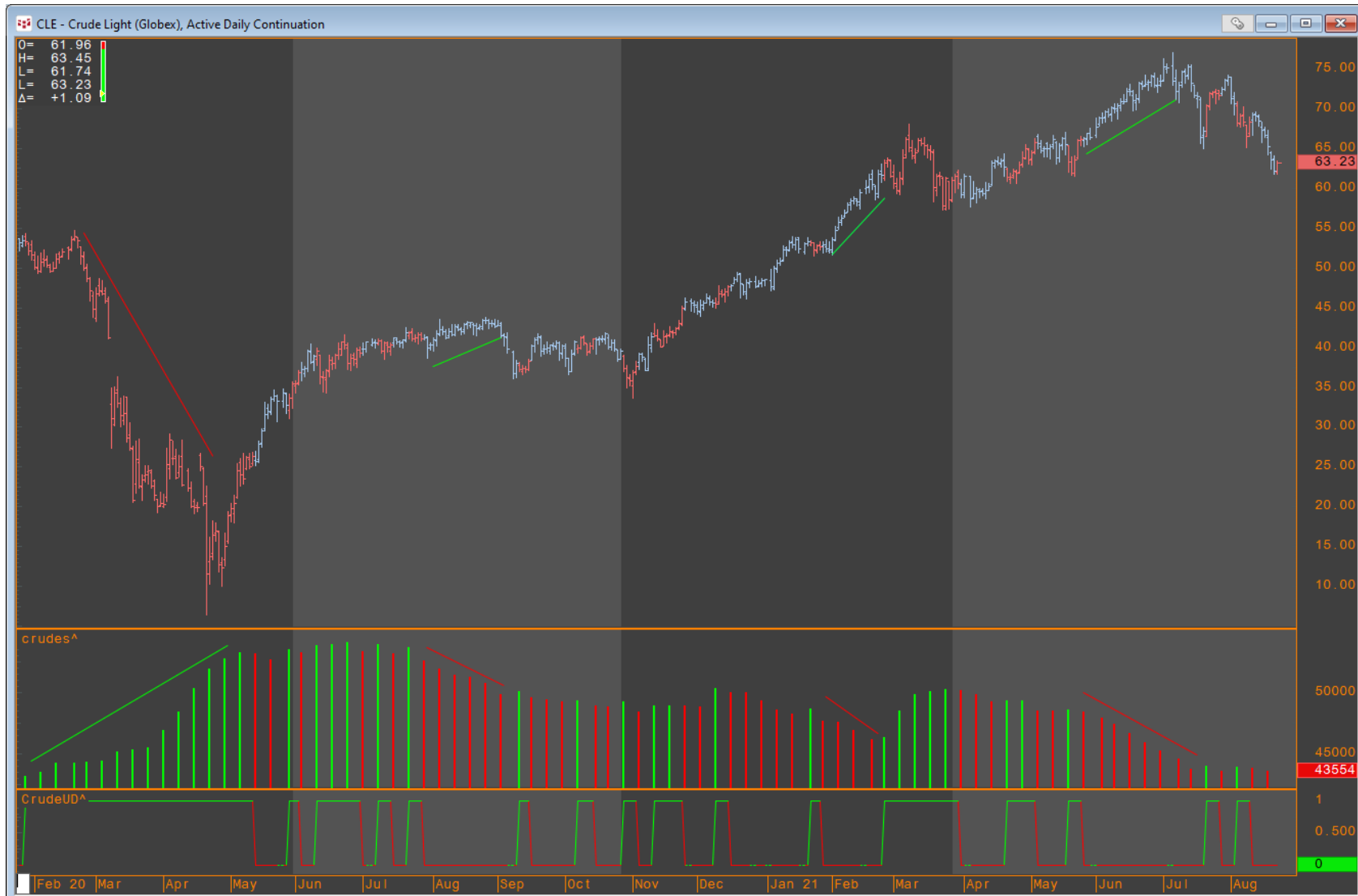
Crude Oil Imports, Production and Stocks (more commonly known as Crude Inventories) are figures that come out weekly.

Fundamental Data – Stocks



Crude Oil Stocks data can be used in a wide range of manners due to its impact on different timeframes

Fundamental Data – Stocks



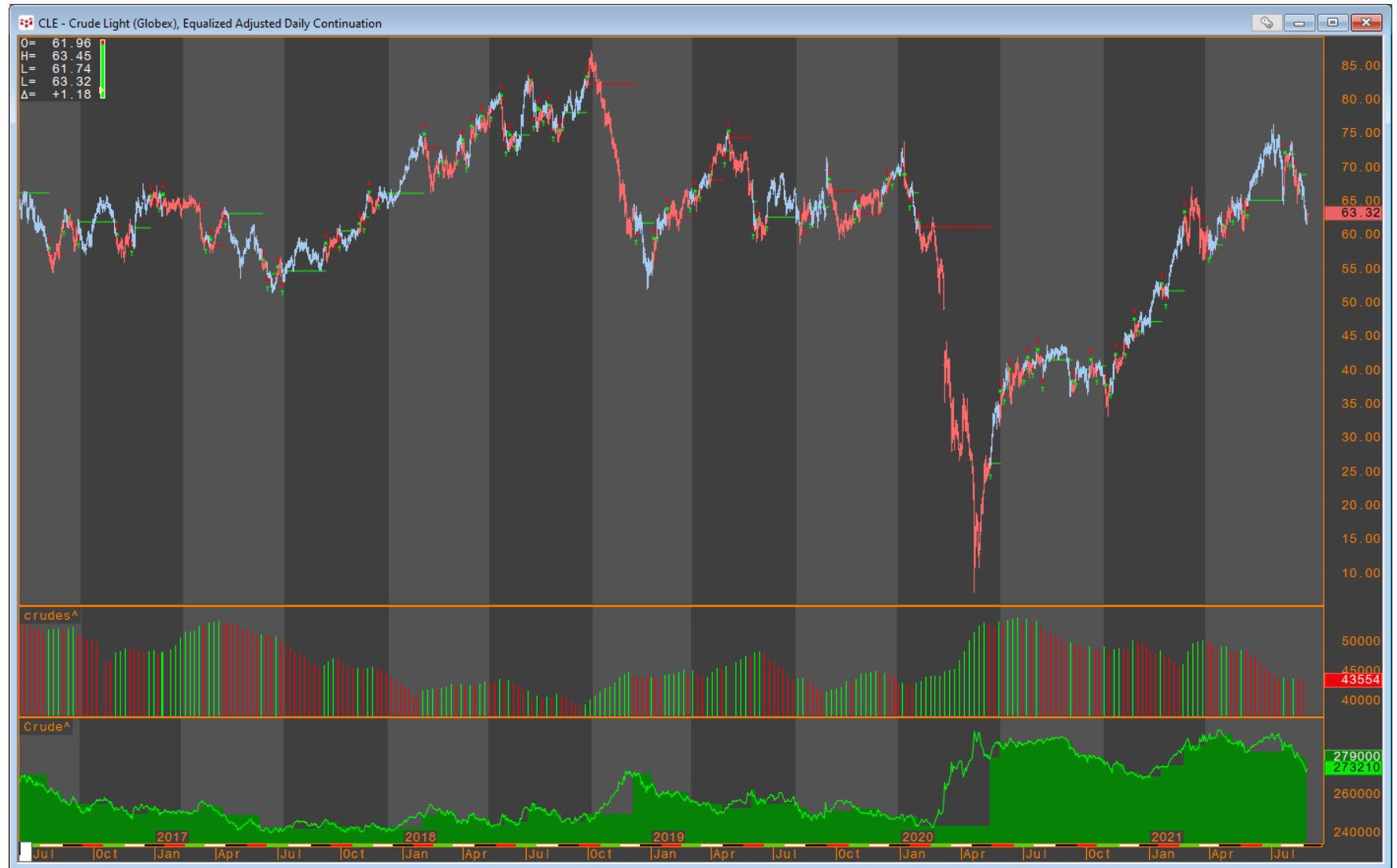
CQG Inc. © 2021 All rights reserved worldwide. <http://www.cqg.com>

CLE - Crude Light (Globex), Active Daily Continuation | Mon Aug 23 2021 14:00:42, CQG 21.12.8085

On a daily timeframe, clear indication that the decrease in Oil stocks has a relative bullish impact on crude prices.

Fundamental Data – Stocks

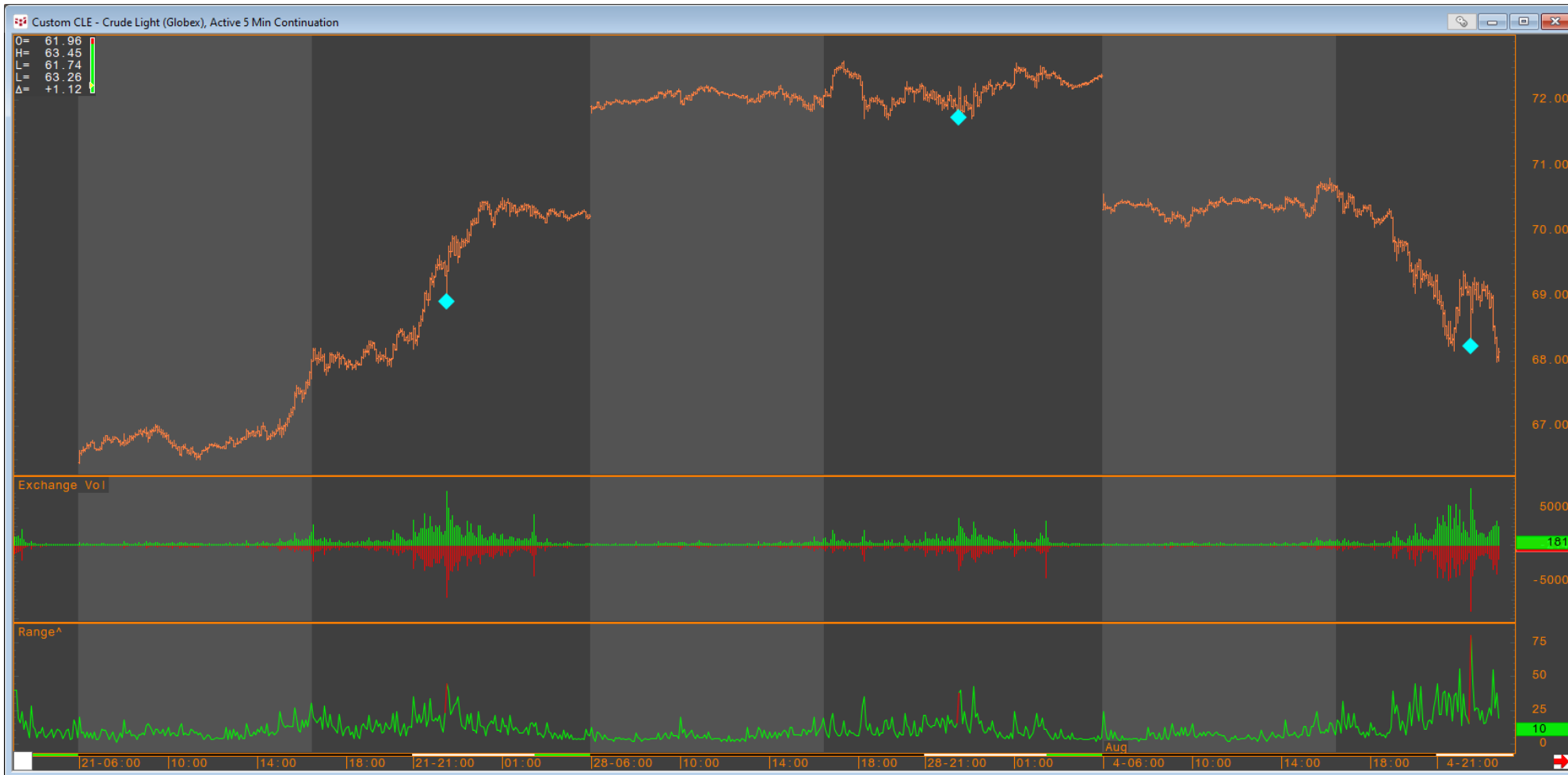
Even fundamental data can be the basis of strategies on either the futures contracts themselves or through options trading to limit drawdown risk.



CQG Inc. © 2021 All rights reserved worldwide. <http://www.cqg.com>

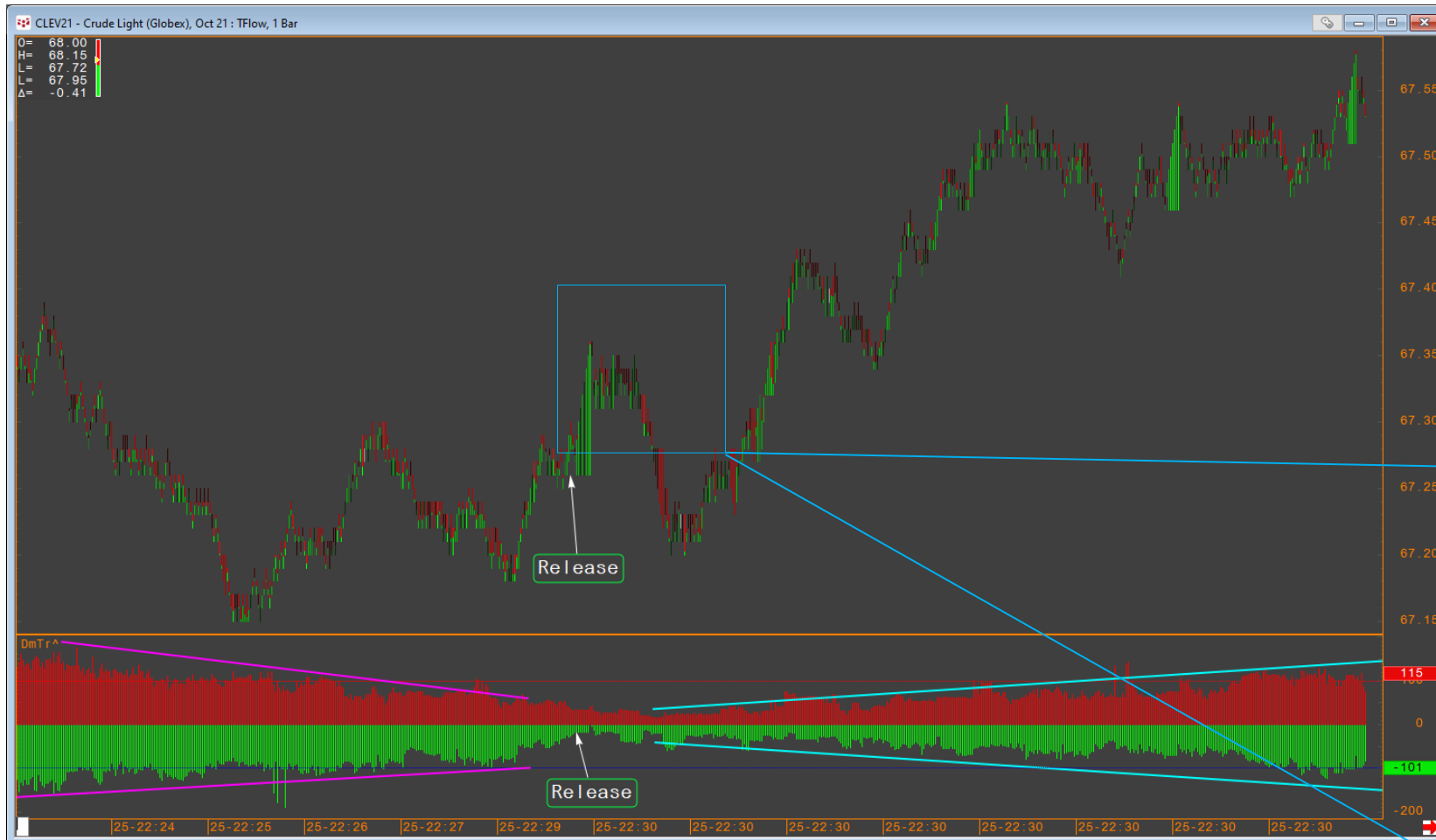
CLE - Crude Light (Globex), Equalized Adjusted Daily Continuation | Mon Aug 23 2021 14:10:24, CQG 21.12.8085

Fundamental Data – Stocks

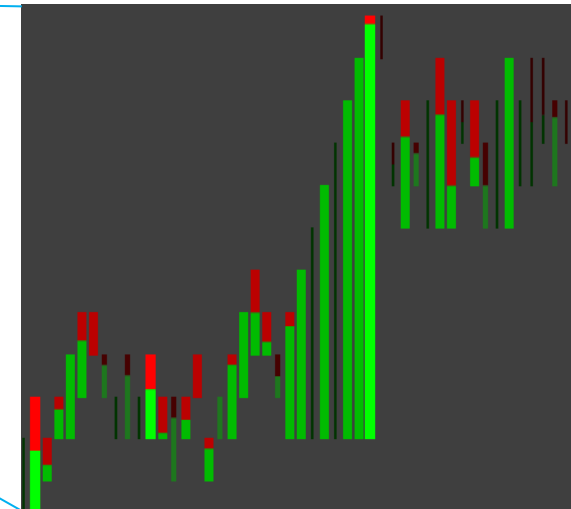


On an intraday timeframe, the impact is a lot more visible. Long-term players will probably be on the lookout for any major change in stocks value. Medium/short-term players tend to avoid being in the market around that time to avoid the volatility and would get out shortly before the release. Short-term algo traders get in on the release.

Fundamental Data – Stocks



TFlow charts show the activity on the best Bid and Offer with both price and volume. We can also see the resting volume dynamic for the 4 levels around the best bid and offer represented below the chart.



Correlation

Timeframe	Bars	E-Mini S&P 500, Sep 21	Australian Dollar (Globex), Sep 21	Canadian Dollar (Globex), Sep 21	30yr US Treasury Bonds (Globex), Sep 21	Bitcoin (Globex), Aug 21	Japanese Yen (Globex), Sep 21	Gold (Globex), Dec 21	Platinum (Globex), Oct 21	Copper (Globex), Dec 21	NY Harbor ULSD, Oct 21	RBOB Gasoline (Globex), Oct 21
5	3	100	99	87	-50	-87	-87	-87	89	97	100	98
5	5	76	37	3	-28	-45	14	-20	60	90	90	97
5	10	84	45	-55	84	61	90	41	-34	97	98	99
5	20	59	26	-13	61	48	48	24	-12	56	90	95
15	3	44	-13	-62	94	83	100	95	-83	92	94	100
15	5	74	52	-66	71	74	79	46	-44	98	95	97
15	10	27	2	-1	30	-33	17	-14	-45	22	97	88
15	20	30	4	0	21	-23	3	-19	-41	7	95	35
30	3	75	82	-65	93	96	100	78	-47	98	99	100
30	5	46	31	-3	43	11	40	4	-28	54	99	94
30	10	37	23	14	27	9	22	6	-25	48	97	68
30	20	65	60	54	-13	35	19	46	44	51	92	62
60	3	91	98	70	96	97	100	99	85	99	98	100
60	5	77	69	46	63	11	59	48	12	79	96	87
60	10	75	79	67	25	62	57	70	57	77	95	86
60	20	51	52	52	-21	36	24	65	31	12	81	62
ADC	3	94	91	-2	-77	42	-47	-61	-46	47	85	82
ADC	5	98	100	97	-79	-41	-40	29	-8	95	99	96
ADC	10	70	87	93	-80	-11	8	17	46	81	96	82
ADC	20	-21	77	88	-19	-69	10	26	67	90	97	83

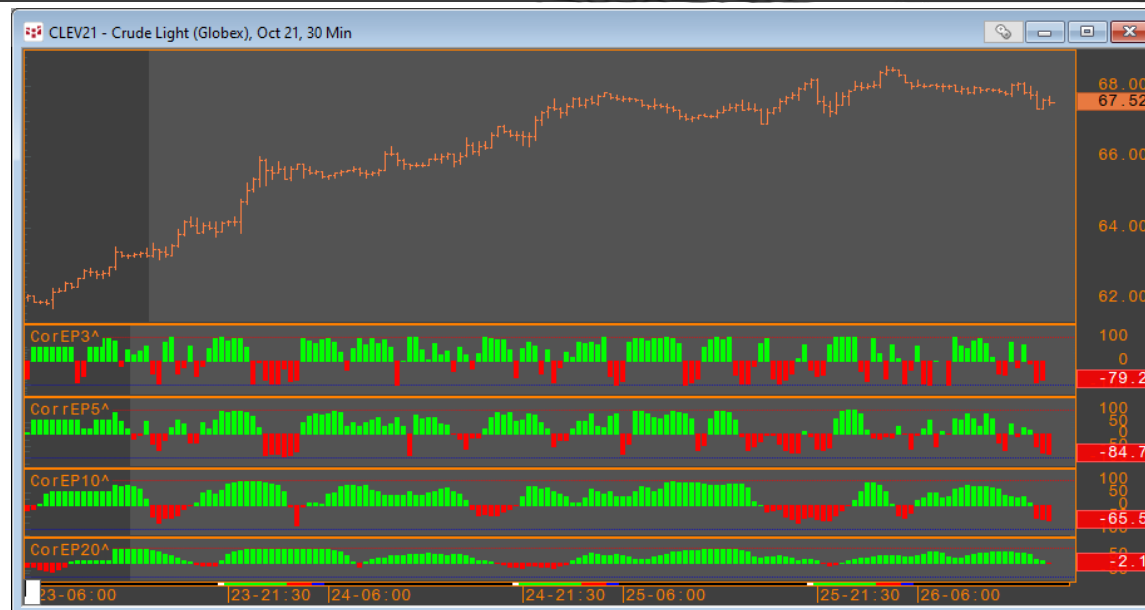
Correlation is considered a natural indicator to identify similarities between data series. Some hedge funds have been using data series from the same instrument but different times to look for similarities and repeating patterns. Others use it for Arbitrage opportunities.

Correlation



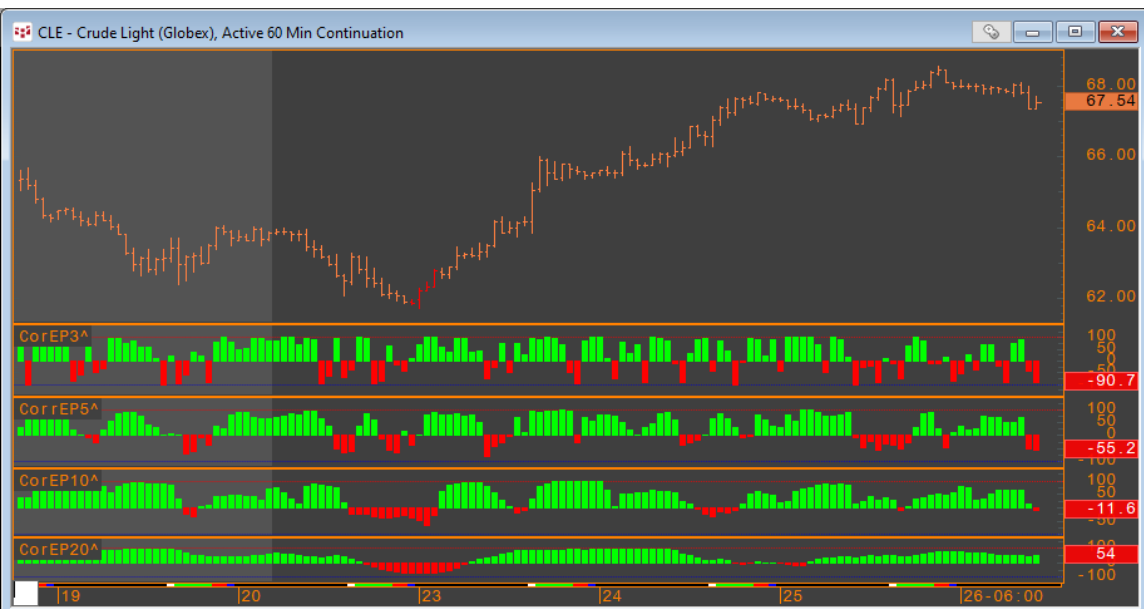
CQG Inc. © 2021 All rights reserved worldwide. <http://www.cqg.com>

CLEV21 - Crude Light (Globex), Oct 21, 5 Min | Thu Aug 26 2021 16:46:29, CQG 21.12.8085



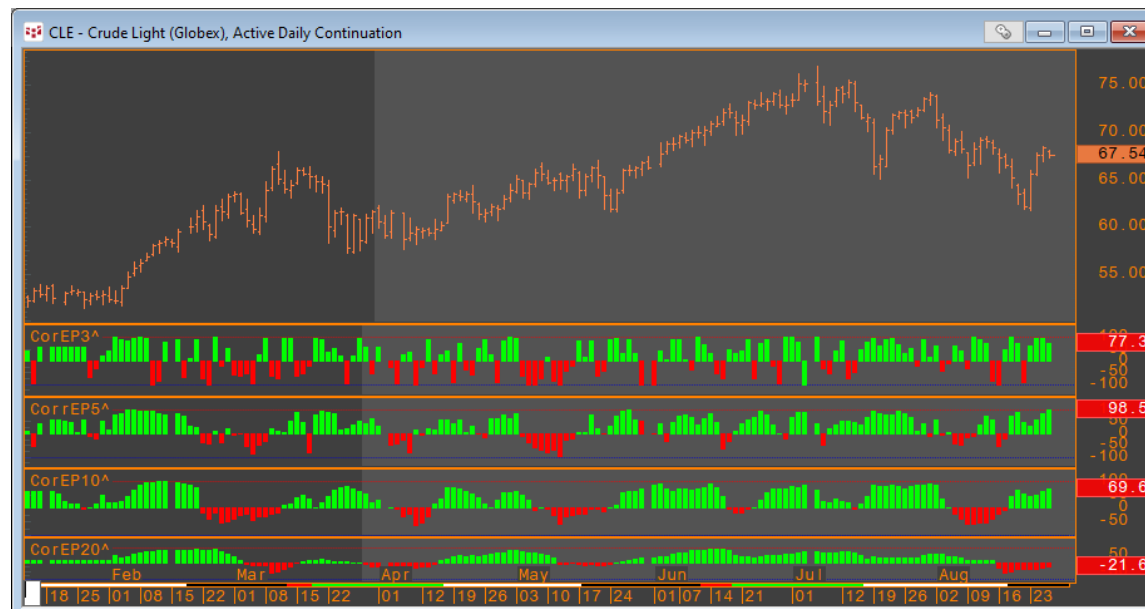
CQG Inc. © 2021 All rights reserved worldwide. <http://www.cqg.com>

CLEV21 - Crude Light (Globex), Oct 21, 30 Min | Thu Aug 26 2021 16:46:38, CQG 21.12.8085



CQG Inc. © 2021 All rights reserved worldwide. <http://www.cqg.com>

CLE - Crude Light (Globex), Active 60 Min Continuation | Thu Aug 26 2021 16:46:47, CQG 21.12.8085



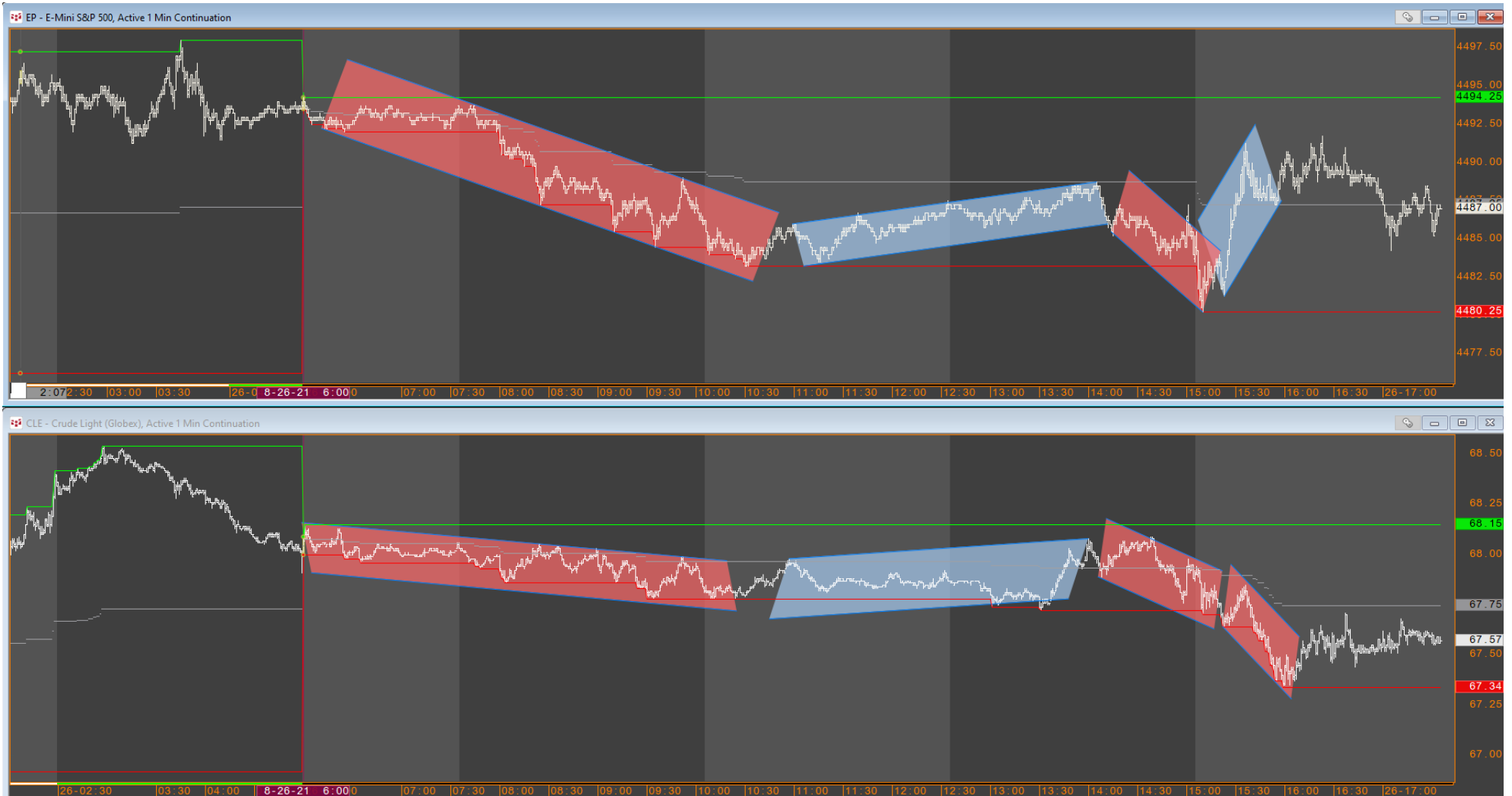
CQG Inc. © 2021 All rights reserved worldwide. <http://www.cqg.com>

CLE - Crude Light (Globex), Active Daily Continuation | Thu Aug 26 2021 16:46:54, CQG 21.12.8085

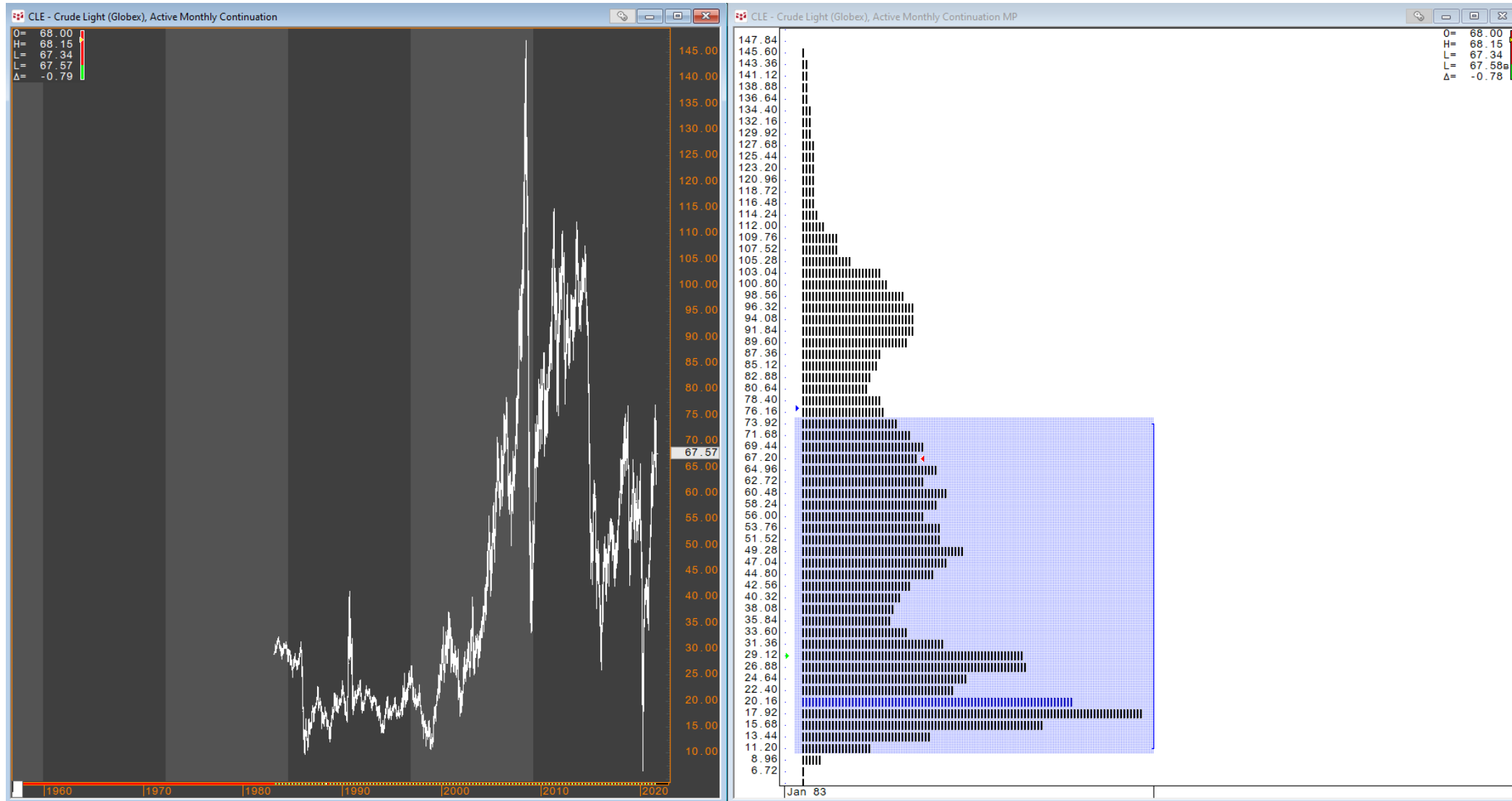
Correlation

Once a high correlation factor has been identified on multiple higher timeframes, ideas emerge on the lower timeframes.

Looking historically, we can also see that eMini S&P500 tends to move and/or drag crude oil prices.

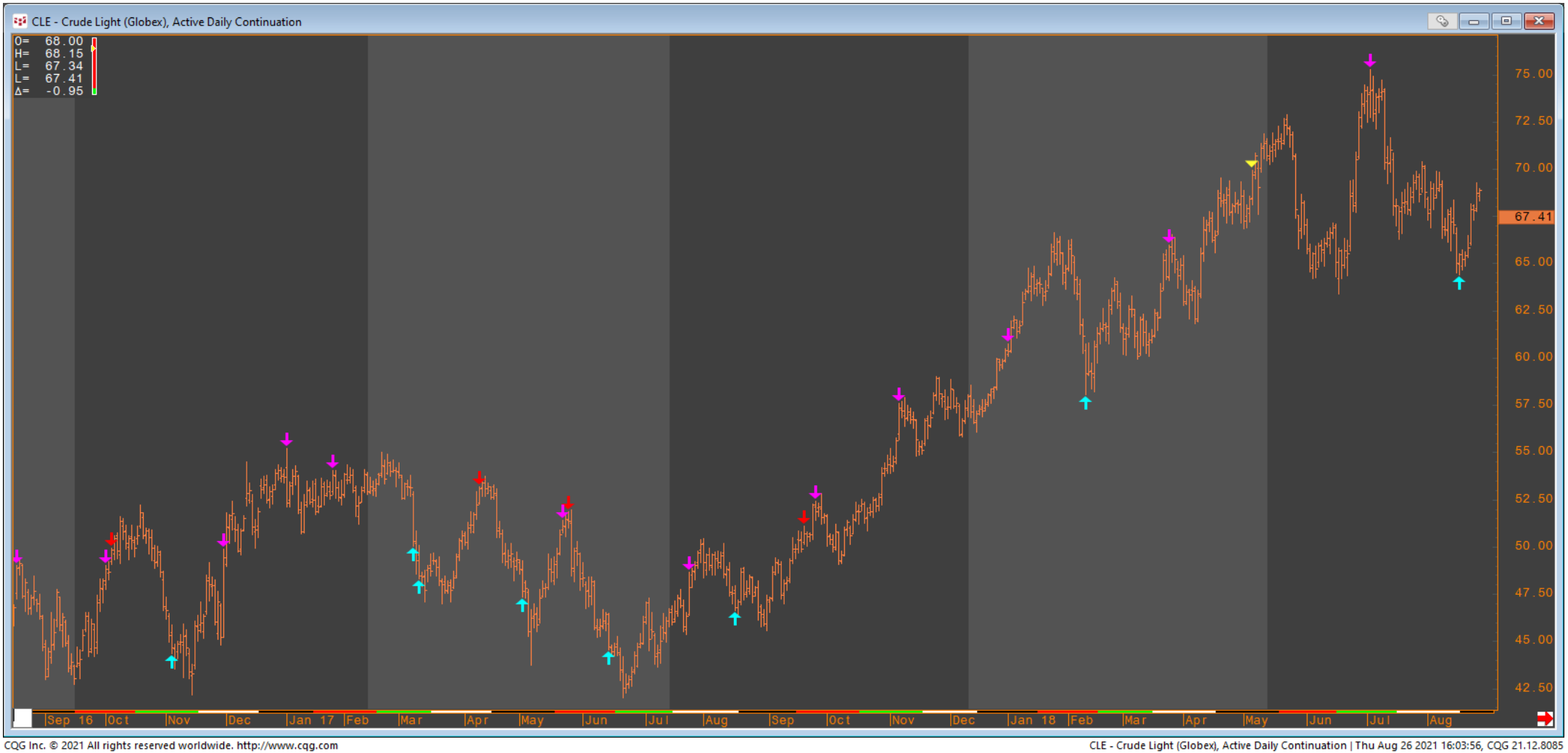


Market Profile



Market Profile charts are a different way to show where the liquidity may be at any given time by showing the accepted and rejected price levels.

Cycle Analysis



Example of medium term cycle analysis and display.



www.cqg.com

Disclaimer

Trading and investment carry a high level of risk, and CQG, Inc. does not make any recommendations for buying or selling any financial instruments. We offer educational information on ways to use our sophisticated CQG trading tools, but it is up to our customers and other readers to make their own trading and investment decisions or to consult with a registered investment advisor.

CQG®, DOMTrader®, SnapTrader®, TFlow®, TFOBV®, TFOBVO®, TFVOL®, and Data Factory™ are trademarks of CQG, Inc.

